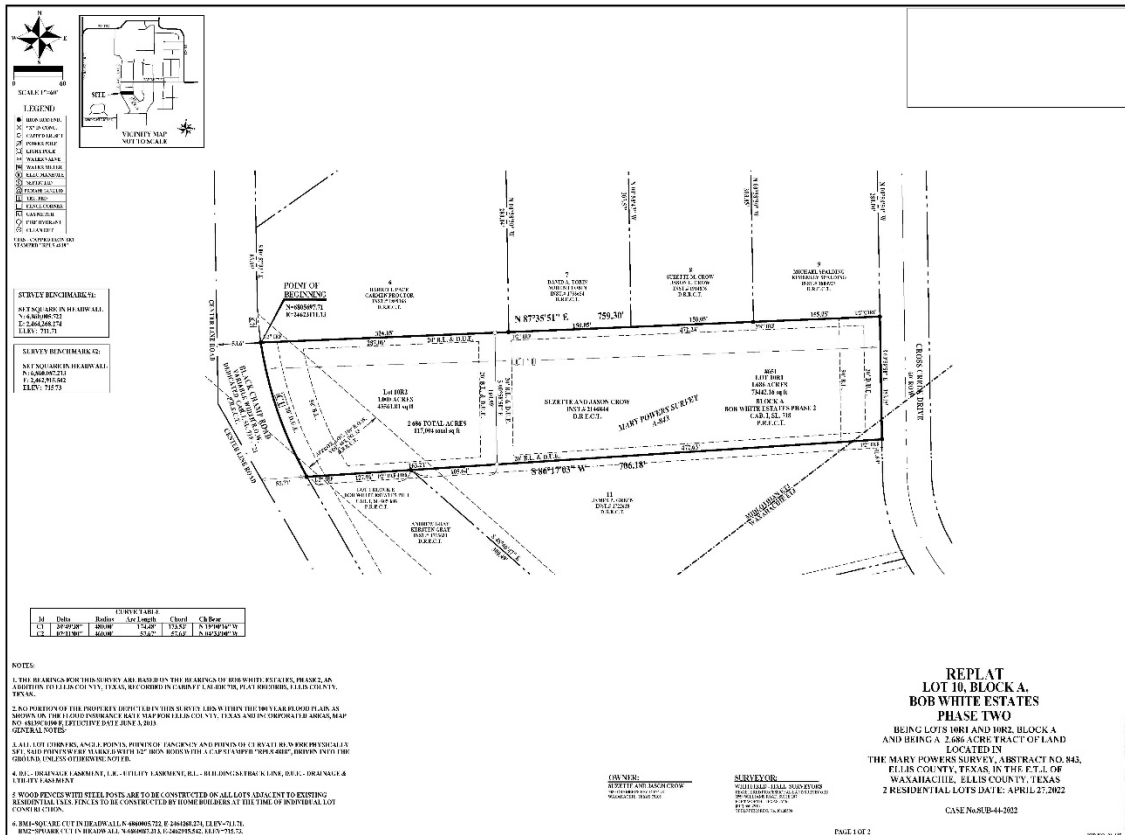




# Public Notice - Replat Request

The Ellis County Commissioners' Court will consider and act upon a replat application for **Bob White Estates Phase Two, Lots 10R1 & 10R2, Block A**, to create one (1) additional lot. The property contains ± 2.686 acres of land in the Mary Powers Survey, Abstract No. 843, located on the east side of Black Champ Road, ± 793 feet south of the intersection of Bob White Road and Black Champ Road, in the extraterritorial jurisdiction (ETJ) of Waxahachie, Road and Bridge Precinct No. 4. A copy of the replat request is shown below.



The replat will be presented before the Commissioners' Court on Tuesday, **July 26, 2022, at 2:00 PM** on the second floor of the historic Ellis County Courthouse, 101 West Main Street, Waxahachie, TX. 75165. Please direct any questions to the Department of Development at 972-825-5200, or by email at [dod@co.ellis.tx.us](mailto:dod@co.ellis.tx.us).